

# TC



TC-650 / TC-1100



TC-2000



TC-2500 / TC-3000

## Main Feature

### • Satisfying TEES qualified UPS

TC UPS went through several practical experiments and confirmed its industrial grade power protection. TC UPS is also compliant to Transportation Electrical Equipment Specifications (TEES) and could widely applied to outdoor equipment.

### • Wide Operating Temperature range -37°C to +74°C and no derating

To meet the harsh operating environment, TC UPS is specially designed to operate in the temperature from (-37°C to +74°C), and no derating at extreme temperature range, fully protect critical device.

### • Programmable Dry Contacts

6 outputs and 1 input programmable dry contact, provided to user for better power management and accident resilience.



### • Various COMMUNICATIONS Available

TC provides various ways of communication

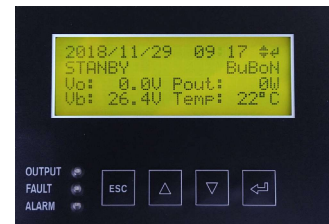
- USB B type
- RS-232
- Ethernet port (optional)

### • Generator Mode Compatibility

Generator mode allows wider variation in input voltage and frequency while AC generator is applied.

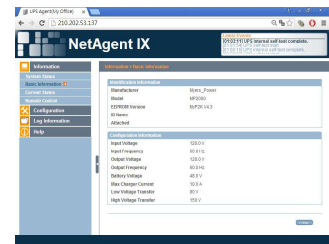
### • Accurate Message Deliver

4-line 20 character display ; High contrast monitor remains the same display sharpness while maintaing under sunshine.



### • Particular Information Monitoring

Specially customized UPS monitoring system is applied to display specific TC information simply with web browser.



### • Flexible Communication Method

With communication slot, UPS status and scheduled action could easily be collected from system monitoring.

### • Enhanced Power Management Ability

Extra input ports are prepared for more reference while UPS power management.

### • Built-in AVR Function

Fluctuating voltage, brownout and other voltage problem can be stabilized through TC in-built AVR for your best interest.

### • Inverter Mode

TC UPS is capable of running continuously in inverter mode and provide current limit protection.

# Wide Temperature Range UPS

## Specification

Model	TC-650	TC-1100	TC-2000	TC-2500	TC-3000
<b>Configuration</b>					
Capacity (VA)	650 VA	1100 VA	2000 VA	2500 VA	3000 VA
Capacity (Watts)	650 W	1100 W	2000 W	2500 W	3000 W
<b>Input</b>					
Voltage	120VAC ±25% , 220 / 230 / 240VAC ±25%			220 / 230 / 240VAC ±25%	
Frequency	120VAC 60Hz , 220 / 230 / 240VAC 50 / 60 Hz				
<b>Output</b>					
Waveform	Pure Sine Wave				
Voltage	120VAC or 220 / 230 / 240VAC			220 / 230 / 240VAC	
Frequency	50 Hz / 60 Hz ±0.5 Hz				
Transfer Time	Normal Mode (Max.)	12 ms			
	Generator Mode (Max.)	25 ms			
AC Input & Output Connectors	Terminal Block , Anderson PP45 Quick connector, IEC socket				
<b>Protection</b>					
Full Protection	Overload, Breaker				
<b>Management &amp; Communication</b>					
Communication Port	RS232 , USB B Type, SNMP card (Option)				
<b>Physical</b>					
Dimensions (WxDxH) (mm)	432 x 254 x 88.6	432 x 254 x 133	432 x 320 x 133	432 x 460 x 133	
Weight (kgs)	13	21	21	34	
Shipping Dimensions (mm)	540 x 388 x 233	540 x 388 x 277	540 x 454 x 277	676 x 601 x 281	
Shipping Weight (kgs)	14	23	24	39	
<b>Indicators</b>					
LCD Display	4 Line Multi-function LCD				
LED Display	Output Status, Alarm, Fault LED				
<b>Environmental</b>					
Operating Temperature	-37 - +74°C				
Operating Humidity	0-95 % RH (Non-condensing)				
Audible Noise	Less than 50 dB		Less than 60 dB		
<b>Battery</b>					
String Voltage	24 VDC		48 VDC		
Type	Lead-acid Battery				
Max Charge Current	TC-650 / 1100 10A, TC-2000 / 2500 / 3000 10A, (30A Option)				

\* Specifications are subject to change without further notice.

\* Specifications are for reference, please refer to information based on real product.

\* No derating under full temperature range.

20240420