

# SMART KING PRO



SPR-500-700A



SPT-500-700A



SPT-1000-3000A



SPR-1000-3000A

## Main Feature

### Build-in Automatic Voltage Regulator(AVR)

Attached with AVR stabilize fluctuate voltage problem

### Simple & Clear LCD display

Clear & easy reading LCD indicator

### Auto Self-diagnose and alarm warning

Self-test diagnose and emergency alarm warning

### High quality pure sine wave output

Pure sine wave safety output for load

### Power saving design prolongs model usage age

Green mode energy saving design

### Power protection on critical device

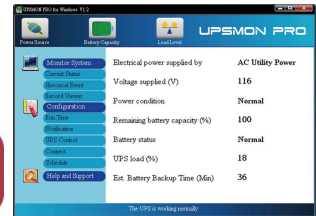
Surge, short circuit and overload protection to ensure power safety

### Battery easy-swappable replacement design

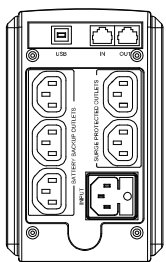
Simple and easy battery replacement process

### UPSMON PRO and APP

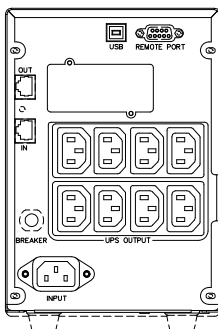
Instant UPS status is available to monitor through remote control system



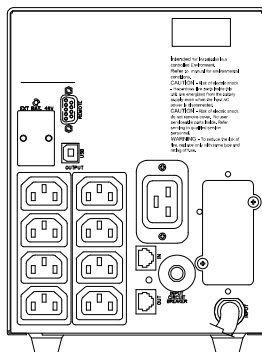
## Standard Outlet



SPT-500-700A



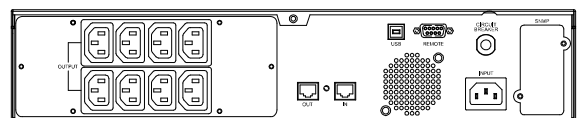
SPT-1000-2000A



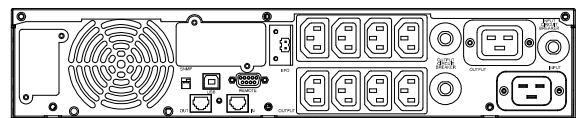
SPT-3000A



SPR-500-700A



SPR-1000-2000A



SPR-3000A

## Specification

Model	SPT-500A SPR-500A	SPT-700A SPR-700A	SPT-1000A SPR-1000A	SPT-1500A SPR-1500A	SPT-2000A SPR-2000A	SPT-3000A SPR-3000A	
<b>Configuration</b>							
Capacity (VA)	500 VA	700 VA	1000 VA	1500 VA	2000 VA	3000 VA	
Capacity (Watts)	400 W	560 W	800 W	1200 W	1600 W	2400 W	
Form	Tower Type : SPT model						
	Rack and Tower Type : SPR model						
<b>Input</b>							
Voltage	100 / 110 / 120 VAC or 220 / 230 / 240 VAC					220/230/240 VAC	
Input Voltage Range	75 - 150 or 165 - 300 VAC					165 - 300 VAC	
Input Frequency Range	50 Hz / 60 Hz ±10% (Auto Sensing)						
<b>Output</b>							
Waveform	Pure Sine Wave						
Voltage	100 / 110 / 120 VAC or 220 / 230 / 240 VAC					220/230/240 VAC	
Frequency	50 Hz / 60 Hz ±0.5%						
Transfer Time	2-4 ms (Typical)						
<b>Protection</b>							
Full Protection	Overload, Surge, Short Circuit						
Tele Communication	RJ11 / RJ45 (Except SPR-500A/700A)						
<b>Battery</b>							
Type Quantity (Tower)	12V 7.2Ah x1	12V 9Ah x1	12V 7Ah x2	12V 7.2Ah x2	12V 9Ah x2	12V 7Ah x4	
Type Quantity (Rack)	6V 7Ah x2	6V 9Ah x2	12V 7Ah x2	12V 7.2Ah x2	12V 9Ah x2	12V 7Ah x4	
Sealed, Maintenance Free	Yes						
Typical Recharge Time	3-4 hr to 90%						
<b>Management &amp; Communication</b>							
Indicator (Tower)	LED Panel		LCD Panel				
Indicator (Rack)	LCD Panel		LCD Panel (Auto rotation)				
Communication Port (Tower)	USB B type		USB B type, RS232 & SNMP SLOT				
Communication Port (Rack)	USB B type, RS232 & SNMP SLOT						
<b>Physical</b>							
<b>SPT</b>	Dimensions (WxDxH)(mm)	102 x 326 x 165		140 x 380 x 210		170 x 450 x 226	
	Weight (kgs)	6.2	6.8	14	15	17.5	25.4
	Shipping Dimensions (mm)	196 x 410 x 263		258 x 487 x 326		298 x 356 x 553	
	Shipping Weight (kgs)	7.2	7.8	15.4	16.4	18.9	28.2
<b>SPR</b>	Dimensions (WxDxH)(mm)	428 x 335 x 44		428 x 431 x 84		428 x 562 x 84	
	Weight (kgs)	8.9	9.1	14.4	16.7	18.8	26.5
	Shipping Dimensions (mm)	563 x 473 x 168		577 x 590 x 211		577 x 720 x 211	
	Shipping Weight (kgs)	10.9	11.1	18.2	20.4	22.6	30.5
<b>Alarm</b>							
Overload / Fault	Continuous Beeping						
Battery Mode	Beep every 4 seconds						
Low Battery	Beep every 1 second						
<b>Environment</b>							
Operating Humidity	0-90 % RH at 0-40°C (Non-condensing)						
Audible Noise	Less than 40 dB						

\* Specifications are subject to change without further notice.

\* Specifications are for reference, please refer to information based on real product.

20240322