

NEXT

High-performance and high-quality NEXT with color touch screen and multiple language options.

Application



NXT-1K-3KVA

Main Feature

• Color Touch Screen

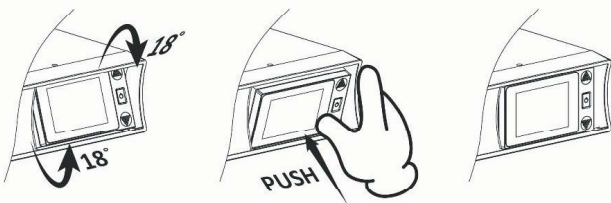
The industry-leading color touch screen design allows users to operate and configure the UPS in a more intuitive way.

• Multi-Section Fan Regulation

Multi fan speed segment for particular device loading range, NXT remains suitable temperature for high efficiency performance and reduces the operating noise immensely.

• Auto-Rotating LCD Display

Industry-leading auto-rotating LCD display suits installation formation in vertical tower or rack mount. User instantly acquire all information from big size and clear display.



• Screen Angle Adjustment

The screen angle can be adjusted to make it easier for users to obtain information.

• Hot Swappable & Battery Easy Replacement

Specific battery compartment design for easy battery replacement & ensure continuity power protection during equipment battery replacement.

• Manual and Automatic Bypass

Once the bypass is activated, power sidestep UPS to ensure power continuity for connected equipment. Bypass mode can transfer automatically and manually.

• Load Segment

Load segments are managed groups of outlets that can be turned on or off independently.

• Output Power Factor 1

Power Factor 1.0 output, perfectly protect your missional power system and ensure the best output performance.

• Automatic Battery Pack Detection

The host can automatically detect that the battery pack has been added and automatically calculate the discharge time.

• Multi-socket function

Multiple sockets allow users to use multiple loads at the same time, increasing the usability.

• 50 / 60 Hz Frequency Converter Mode (customized function)

No matter how low/high the input voltage is, lock output frequency at 50 Hz or 60 Hz.

• Multiple Language Options

The operation interface can support seven languages.

• Generator Compatible

Generator Mode feature controls highly unstable power to clean power support.

• True Double Conversion

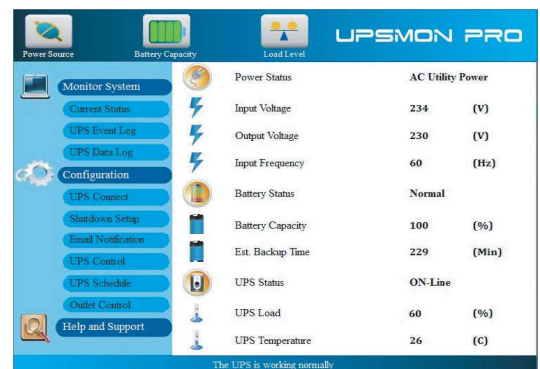
True double conversion UPS provides clean, high quality and stable power.

• EPO (Emergency Power Off)

Emergency Power Off enables imminent shutdown during critical times.

• UPSMON PRO support

UPSMON PRO control UPS and provide UPS status instantly.



UPSMON PRO Interface

Premium On-Line High Performance Series

Specification

Model		NXT-1000	NXT-1500	NXT-2000	NXT-3000
Configuration					
Capacity (VA)		1000 VA	1500 VA	2000 VA	3000 VA
Capacity (Watts)		1000 W	1500 W	2000 W	3000 W
Form		Rack and Tower Type			
Phase		Single Phase			
Energy Saving		Yes - ECO Mode Efficiency >94%			
Input					
Voltage		208 - 300 VAC			
Input Voltage Range		120 - 300 VAC, < 25% Load 140 - 300 VAC, < 50% Load 160 - 300 VAC, < 75% Load 180 - 300 VAC, < 100% Load			
Input Frequency Range		50 / 60 Hz (Auto Sensing)			
Input Power Factor		>0.98			
Cold Start		Yes			
Output					
Rated Power Factor		1.0			
Waveform		Pure Sine Wave			
Voltage		200 / 208 / 220 / 230 / 240 VAC ± 2%			
Frequency		50 / 60 Hz ±0.25 Hz			
Transfer Time		0 ms			
Harmonic Distortion		≤ 2.5% THD at Linear Load			
Crest Factor		3 : 1			
Load Segment		Yes			
EPO Function		Yes			
Protection					
Overload	Line Mode	110% - 124% for 10 minutes / 125% - 149% for 2 minutes 150% - 199% for 10 seconds / >200% for 240 milliseconds			
	Battery Mode	105% - 110% for 10 seconds / 110% - 119% for 3 seconds 120% - 150% for 1.5 seconds / >150% for 240 milliseconds			
Surge Protection		IEC 61000-4-5 Level 3			
Bypass		Internal Bypass (Automatic and Manual)			
Short Circuit Protection		UPS Output Cut Off Immediately			
Battery					
Type		12V 7Ah	12V 9Ah	12V 7Ah	12V 9Ah
Internal Batt.		Yes	Yes	Yes	Yes
Quantity		3	3	6	6
Sealed, Maintenance Free		Yes			
Typical Recharge Time		3 hr to 90%			
External Battery Module		Option			
External Battery Connector		Option			
Management & Communication					
LCD Control Panel		Yes			
Communication Port		RS 232, USB B type			
SNMP Slot		Option			
Audible Alarms		Yes			
Physical					
Power Module	Dimensions (WxDxH) (mm)	428 x 435 x 84		428 x 645 x 84	
	Weight (kgs)	17	18.7	30.6	32.7
	Shipping Dimensions (mm)	546 x 552 x 206		550 x 750 x 220	
	Shipping Weight (kgs)	19.8	21.5	34.4	36.5
Batt. Module	Dimensions (WxDxH) (mm)	428 x 435 x 84		428 x 645 x 84	
	Weight (kgs)	21.3		39.7	
	Shipping Dimensions (mm)	546 x 552 x 206		500 x 750 x 220	
	Weight (kas)	24.1		42.9	

** Specifications are subject to change without further notice.

** Specifications are for reference, please refer to information based on real product.

20250327