

MODBUS - Card (Mini)

Test with MAC-UPS

AA Surface : NET485-U + MAC-UPS

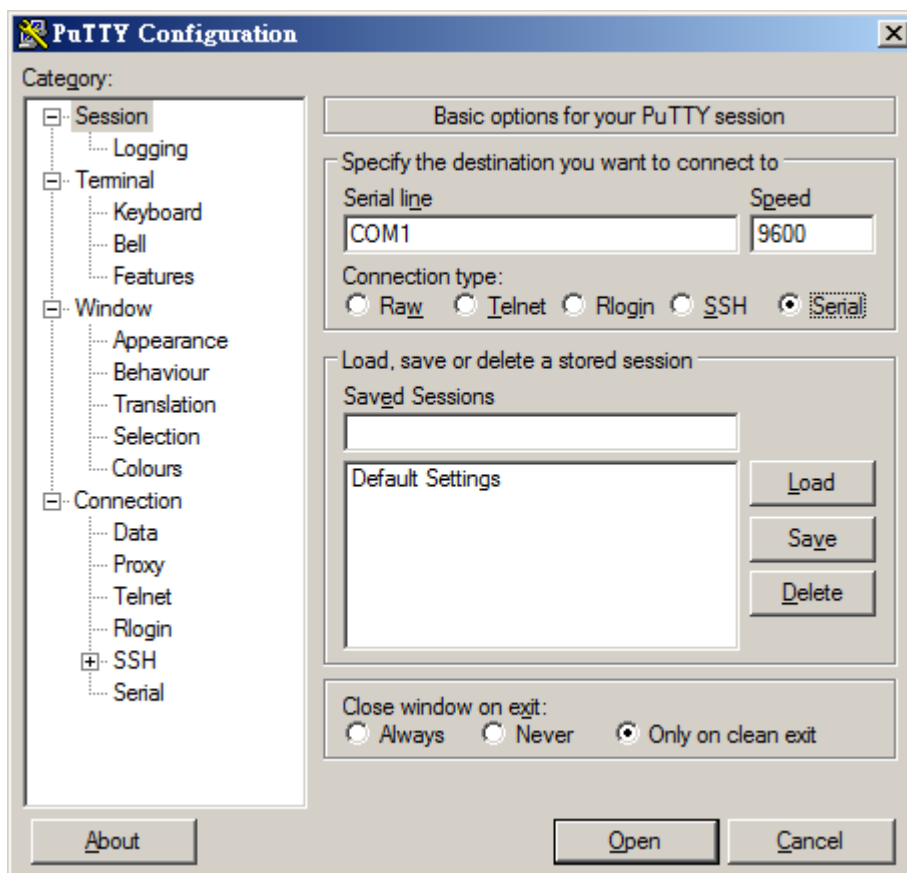


BB. Configuration >> Address Setup

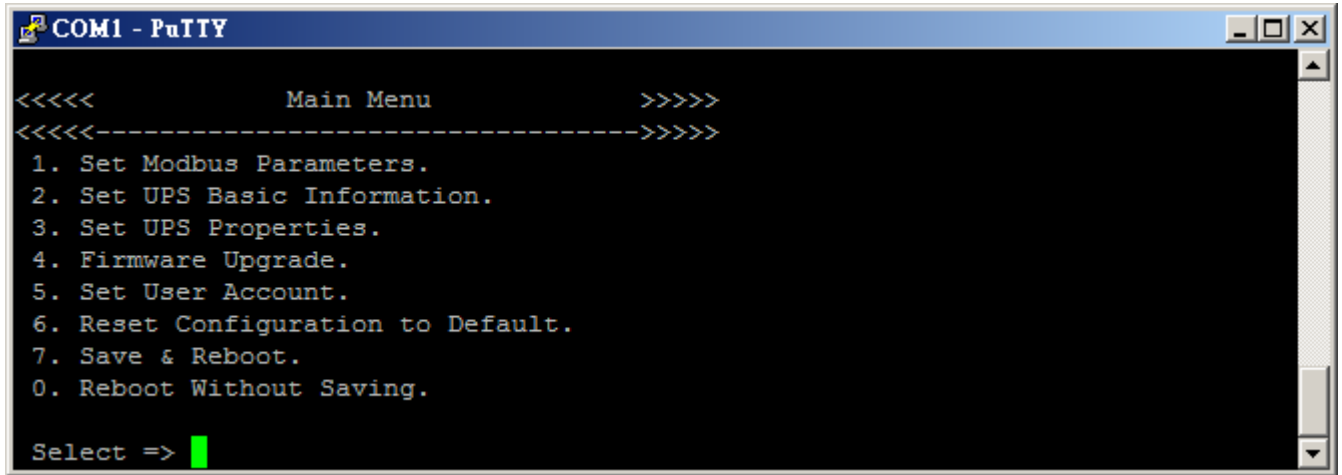
B1. Remove [JP4 + JP2\(Baud Rate 9600\)](#)

B2. RS232 connect UPS and Computer

B3. Start [Hyper-Terminal](#)



B4. ID : Enter >> Password : Enter >> 1. Set Modbus Parameter



B5. Devic Address >>1

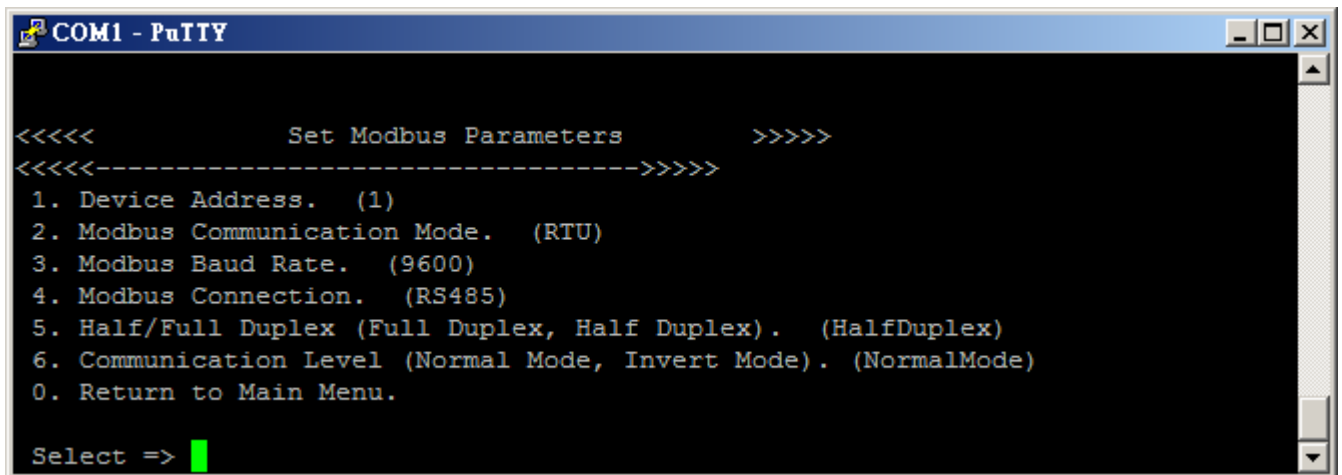
Modbus Communication Mode >> RTU

Modbus Baud Rate >> 9600

Modbus Connection >> RS485

Half / Full Duplex >> HalfDuplex

Communication Level >> NormalMode



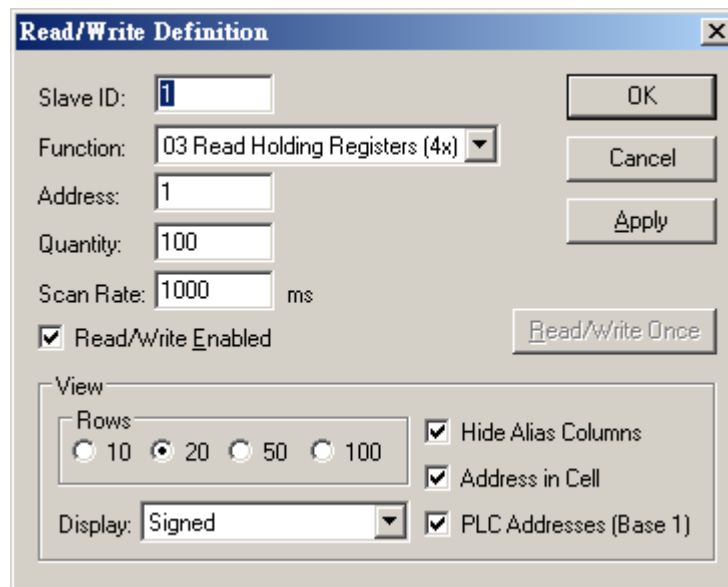
B6. Save and Exit

CC. [Connet on Jump \(JP4 + JP2\)](#) and [USB-to-485Converter](#)

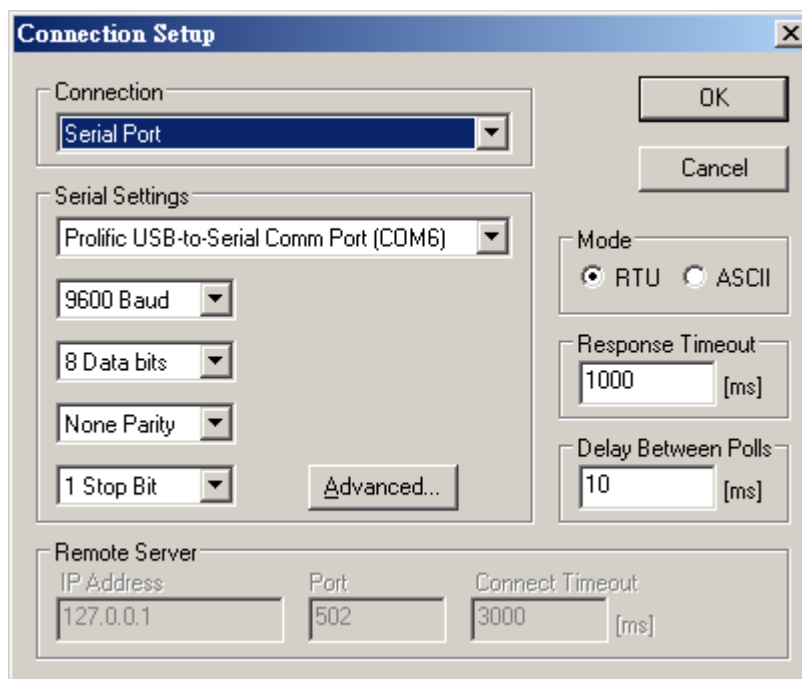
DD. Start application >> Modbus Pull

D1. Display >> **Signed** and **PLC Address (Base 1)**

D2. Setup >> Read and Write Definition

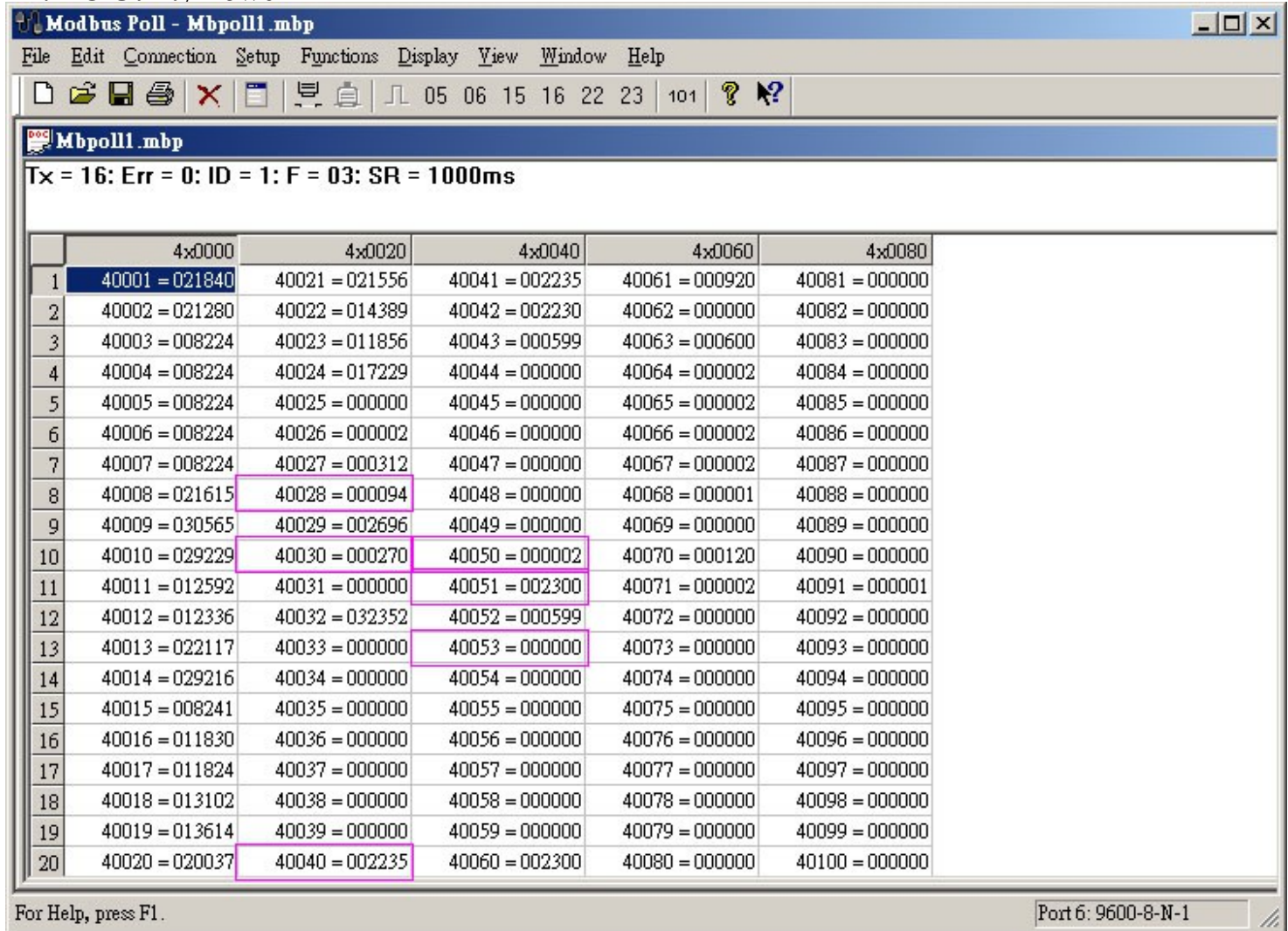


D3. Connection >> Connect



EE. Modbus connection with ups

E1. AC Utility Power



Modbus Poll - Mbpoll1.mbp

File Edit Connection Setup Functions Display View Window Help

05 06 15 16 22 23 101

Mbpoll1.mbp

Tx = 16: Err = 0: ID = 1: F = 03: SR = 1000ms

	4x0000	4x0020	4x0040	4x0060	4x0080
1	40001 = 021840	40021 = 021556	40041 = 002235	40061 = 000920	40081 = 000000
2	40002 = 021280	40022 = 014389	40042 = 002230	40062 = 000000	40082 = 000000
3	40003 = 008224	40023 = 011856	40043 = 000599	40063 = 000600	40083 = 000000
4	40004 = 008224	40024 = 017229	40044 = 000000	40064 = 000002	40084 = 000000
5	40005 = 008224	40025 = 000000	40045 = 000000	40065 = 000002	40085 = 000000
6	40006 = 008224	40026 = 000002	40046 = 000000	40066 = 000002	40086 = 000000
7	40007 = 008224	40027 = 000312	40047 = 000000	40067 = 000002	40087 = 000000
8	40008 = 021615	40028 = 000094	40048 = 000000	40068 = 000001	40088 = 000000
9	40009 = 030565	40029 = 002696	40049 = 000000	40069 = 000000	40089 = 000000
10	40010 = 029229	40030 = 000270	40050 = 000002	40070 = 000120	40090 = 000000
11	40011 = 012592	40031 = 000000	40051 = 002300	40071 = 000002	40091 = 000001
12	40012 = 012336	40032 = 032352	40052 = 000599	40072 = 000000	40092 = 000000
13	40013 = 022117	40033 = 000000	40053 = 000000	40073 = 000000	40093 = 000000
14	40014 = 029216	40034 = 000000	40054 = 000000	40074 = 000000	40094 = 000000
15	40015 = 008241	40035 = 000000	40055 = 000000	40075 = 000000	40095 = 000000
16	40016 = 011830	40036 = 000000	40056 = 000000	40076 = 000000	40096 = 000000
17	40017 = 011824	40037 = 000000	40057 = 000000	40077 = 000000	40097 = 000000
18	40018 = 013102	40038 = 000000	40058 = 000000	40078 = 000000	40098 = 000000
19	40019 = 013614	40039 = 000000	40059 = 000000	40079 = 000000	40099 = 000000
20	40020 = 020037	40040 = 002235	40060 = 002300	40080 = 000000	40100 = 000000

For Help, press F1. Port 6: 9600-8-N-1

40028 >> Battery Capacity (%)

40029 >> Battery Voltage (0.01 Vac)

40030 >> Temperature

40040 >> Input Voltage (0.01 Vac)

40050 >> Output Status unknown(1),onLine(2),onBattery(3),onBoost(4),sleeping(5),onBypass(6),rebooting(7),standBy(8),onBuck(9)

40051 >> Output Voltage (0.01 Vac)

40052 >> Output Frequency (0.1Hz)

40053 >> Output Load (%)

E2. Battery Power

Modbus Poll - Mbpoll1.mbp

File Edit Connection Setup Functions Display View Window Help

05 06 15 16 22 23 101 ? ?

Mbpoll1.mbp

Tx = 57: Err = 0: ID = 1: F = 03: SR = 1000ms

	4x0000	4x0020	4x0040	4x0060	4x0080
1	40001 = 021840	40021 = 021556	40041 = 002230	40061 = 000920	40081 = 000000
2	40002 = 021280	40022 = 014389	40042 = 000000	40062 = 000000	40082 = 000000
3	40003 = 008224	40023 = 011856	40043 = 000000	40063 = 000600	40083 = 000000
4	40004 = 008224	40024 = 017229	40044 = 000000	40064 = 000001	40084 = 000000
5	40005 = 008224	40025 = 000000	40045 = 000000	40065 = 000002	40085 = 000000
6	40006 = 008224	40026 = 000002	40046 = 000000	40066 = 000002	40086 = 000000
7	40007 = 008224	40027 = 000319	40047 = 000000	40067 = 000002	40087 = 000000
8	40008 = 021615	40028 = 000096	40048 = 000000	40068 = 000001	40088 = 000000
9	40009 = 030565	40029 = 002556	40049 = 000000	40069 = 000000	40089 = 000000
10	40010 = 029229	40030 = 000270	40050 = 000003	40070 = 000120	40090 = 000000
11	40011 = 012592	40031 = 000000	40051 = 002295	40071 = 000002	40091 = 000001
12	40012 = 012336	40032 = 030864	40052 = 000000	40072 = 000000	40092 = 000000
13	40013 = 022117	40033 = 000000	40053 = 000000	40073 = 000000	40093 = 000000
14	40014 = 029216	40034 = 000000	40054 = 000000	40074 = 000000	40094 = 000000
15	40015 = 008241	40035 = 000000	40055 = 000000	40075 = 000000	40095 = 000000
16	40016 = 011830	40036 = 000000	40056 = 000000	40076 = 000000	40096 = 000000
17	40017 = 011824	40037 = 000000	40057 = 000000	40077 = 000000	40097 = 000000
18	40018 = 013102	40038 = 000000	40058 = 000000	40078 = 000000	40098 = 000000
19	40019 = 013614	40039 = 000000	40059 = 000000	40079 = 000000	40099 = 000000
20	40020 = 020037	40040 = 000000	40060 = 002300	40080 = 000000	40100 = 000000

For Help, press F1. Port 6: 9600-8-N-1