

## INF RM



Clear UPS status display



### Main Feature

#### High quality pure sine wave output

Pure sine wave safety output for load

#### Build-in Automatic Voltage Regulator(AVR)

Attached with AVR stabilize fluctuate voltage problem

#### Long term power back up time

Extra battery connectable prolongs power backup time for equipment

#### Advanced microprocessor control

Upgraded technic improve power efficiency

#### Clear UPS status display

Attached LCD shows up UPS status

#### Power protection on critical device

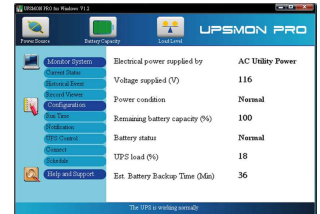
Surge, short circuit and overload protection assurance power safety

#### Rack type design

Rack design can integrate with commercial server rooms

#### UPSMON PRO and APP

Instant UPS status is available to monitor through remote control system



### Specification

Model	INF-500AP RM	INF-800AP RM	INF-1100AP RM	INF-1500AP RM
<b>Configuration</b>				
Capacity (VA)	500 VA	800 VA	1100 VA	1500 VA
Capacity (Watts)	300 W	480 W	770 W	1050 W
Form	Rack Type			
<b>Input</b>				
Voltage	100 / 110 / 120 VAC or 220 / 230 / 240 VAC			
Input Voltage Range	70 - 150 or 140 - 300 VAC			
Input Frequency Range	50 Hz / 60 Hz (Auto Sensing)			
<b>Output</b>				
Waveform	Pure Sine Wave			
Voltage	100 / 110 / 120 VAC or 220 / 230 / 240 VAC			
Frequency	50 Hz / 60 Hz ± 1 Hz			
Transfer Time	2 - 4 ms (Typical)			
<b>Protection</b>				
Full Protection	Overload, Surge, Short Circuit			
<b>Management &amp; Communication</b>				
Indicator	LCD Panel			
Communication Port	USB B type, RS232, SNMP SLOT			
<b>Physical</b>				
Dimensions (WxDxH) (mm)	428 x 219 x 130			
Weight (kgs)	6.7	8.3	11.8	13.2
Shipping Dimensions (mm)	546 x 328 x 278			
Shipping Weight (kgs)	8.9	10.5	14	15.4
<b>Alarm</b>				
Overload / Fault	Continuous Beeping			
Battery Mode	Beep every 2 seconds			
Low Battery	Beep every 0.5 second			
<b>Environment</b>				
Operating Humidity	0-90 % RH at 0-40 °C (Non-condensing)			
Audible Noise	Less than 50 dB			
<b>Battery (Recommend Form)</b>				
Voltage	12 VDC		24 VDC	
Battery Capacity	65 Ah - 200 Ah		100 Ah - 200 Ah	
Maximum Charge Current	10 A max		15 A max	
Discharge Protection	Auto Diagnostics, Over- Discharge, Shot Circuit, Fuse			

\* Specifications are subject to change without further notice.

\* Specifications are for reference, please refer to information based on real product.

20240420