

Din Rail UPS

POWERCOM Din Rail UPS combine easy operating design, multi-function operation and supports power protection on industrial equipment.



Features & Applications

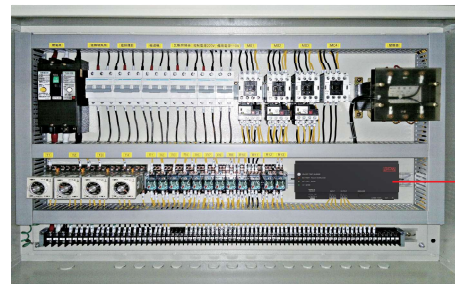
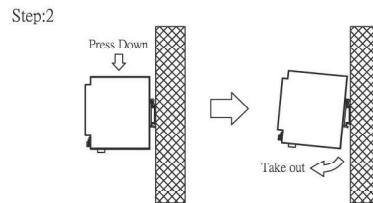
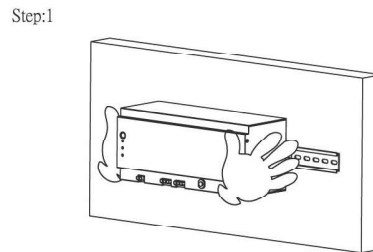
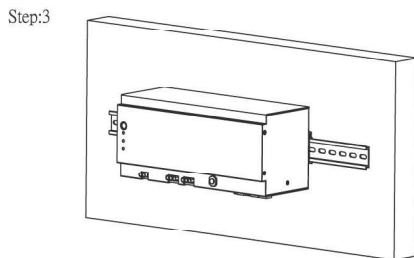
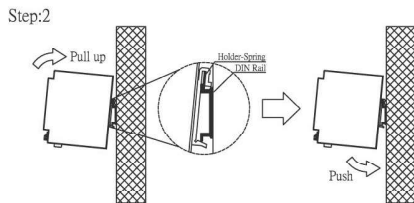
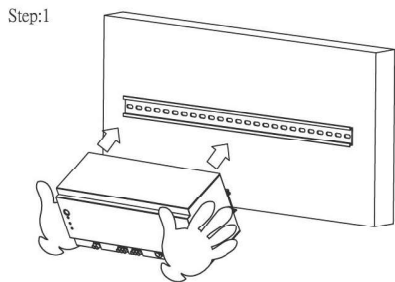
- Light weight and compact industrial design
- Din rail mounting design
- Remote on / off control
- Cold start capability
- Surge, overload, short circuit protection
- RS232 Communication Port

- SNMP card / Modbus card / Dry Contact Relay Box (Option)

Application :

- Factory automation control system
- Robotic machine
- Conveying equipment

Mounting & Removal



Power control cabinet

Front Panel



1. Din rail mount brackets
2. SNMP SLOT
Option : SNMP card, Modbus card
3. RS232 communication port
4. Input circuit breaker
5. Input / output screw connectors
6. Remote on / off connectors
7. LED indicators
Battery warning or overload indicator(Red)
On battery mode indicator(Yellow) AC input(Green)
8. Power ON, OFF and Test bottom
9. AUX DC Output: Output DC power
- 10 Option : Dry Contact Relay Box



Specification

Model	DRU-500	DRU-850	DRU-1000	DRU-1500
Configuration				
Capacity (VA)	500 VA	850 VA	1000 VA	1500 VA
Capacity (Watts)	300 W	510 W	600 W	900 W
Form	Din Rail Mounting Type			
Input				
Voltage	100 / 110 / 120 VAC or 220 / 230 / 240 VAC			
Input Voltage Range	85 - 138 or 165 - 276 VAC			
Input Frequency Range	50 Hz / 60 Hz (Auto Sensing)			
Output				
Waveform	Simulated Sine Wave			
Voltage	100 / 110 / 120 VAC or 220 / 230 / 240 VAC			
Frequency	50 Hz / 60 Hz ± 0.3 Hz			
Transfer Time	2 - 4 ms (Typical)			
Protection				
Full Protection	Overload, Surge, Short Circuit			
Battery				
Type	12V 7.2Ah	12V 9Ah	12V 5Ah	12V 5.5Ah
Quantity	1	1	2	2
Sealed, Maintenance Free	Yes			
Typical Recharge Time	8 hr to 90%			
Management & Communication				
Indicator	LED Panel			
Communication Port	RS232, SNMP SLOT			
Communication	Option: SNMP card / Modbus card / Dry Contact Relay Box			
Physical				
Dimensions (WxDxH) (mm)	282 x 110 x 124		350 x 125 x 135	
Weight (kgs)	4.3	4.9	6.8	7
Shipping Dimensions (mm)	381 x 243 x 231		448 x 253 x 255	
Shipping Weight (kgs)	5.1	5.7	7.7	7.9
Alarm				
Overload / Fault	Continuous Beeping			
Battery Mode	Beep every 4 seconds			
Low Battery	Beep every 0.5 second			
Environment				
Operating Humidity	0-90 % RH at 0-40°C (Non-condensing)			
Audible Noise	Less than 40 dB			

* Specifications are subject to change without further notice.

* Specifications are for reference, actual information should be based on real product.

20250709