

Automatic Transfer Switch (ATS)

- Solution for continuous operating during routine maintenance.
- Automatic Transfer Switch allows loads to operate normally while TC model is removed for regular maintenance or replacement.
- Individual circuit breakers for auxiliary output and UPS input power.
- Manual bypass switch allows loads to operate normally while TC isolated for complete maintenance or removal.
- Utility / Generator manual selector. (Optional)
- Terminal block for line power and loads (input and output).
- Wall/Shelf mounting bracket.

Common Type

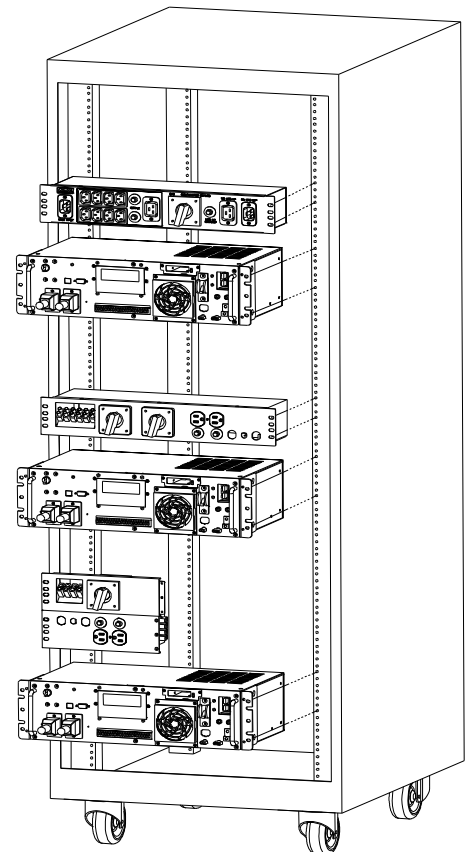
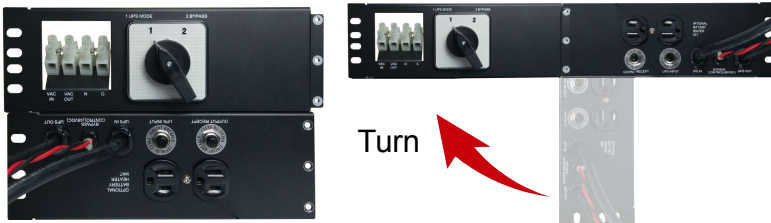


Fully-Enclosed



Generator Select Model (optional)

Semi-Enclosed



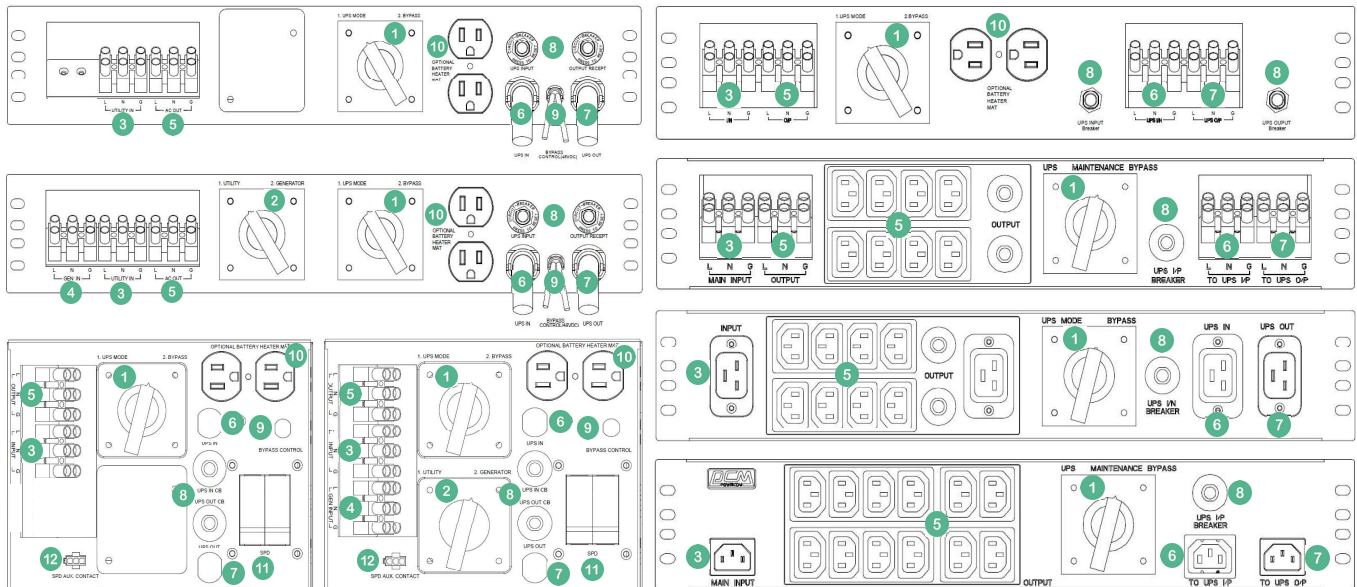
Specification

Model		ATS			
Input					
Nominal Voltage		120 VAC / 30 A	230 VAC / 10A	230 VAC / 16A	230 VAC / 30A
Voltage Range		110 - 130 VAC	199 - 262 VAC		
Transfer	Auto Transfer Switch	10 ms			
Time	Manual Bypass Switch	16 ms (Typical) (Depend on hand switch speed)			
Connection					
Main Input	Terminal Block	IEC - C14	IEC - C20	Terminal Block	
Main Output	Terminal Block	IEC - C13 x 12pcs	IEC - C13 x 8pcs IEC - C19 x 1pcs	Terminal Block IEC - C13 x 8pcs	
Auxiliary Output	5 - 15R Receptacles	N/A			
UPS Connection (TO UPS I/P)	Terminal Block, Powercord, Anderson PP45 Quick connector	IEC - C13	IEC - C19	Terminal Block	
UPS Connection (TO UPS O/P)		IEC - C14	IEC - C20	Terminal Block	
Physical					
Dimension (WxDxH) (mm)Y		483 x 130 x 85			
Weight (kgs)		2.6			
Mounting		2U Rack Mount			
Optional					
Bypass Control (Optional)		24VDC or 48VDC or N/A	N/A		

* Specifications are subject to change without further notice.

* Specifications are for reference, please refer to information based on real product.

Automatic Transfer Switch (ATS)



- 1 Bypass/UPS switch allows the switching of the supply to the load between the incoming supply and the UPS, so the UPS can be isolated for maintenance.
- 2 Utility/Generator switch allows the switching of the supply to the load between the Utility power and the Backup Generator. so that the generator may provide temporary electrical power if the utility source fails.
- 3 Utility input terminal block or receptacle.
- 4 Generator input terminal block or receptacle.
- 5 Equipment Output terminal block or receptacle.
- 6 Output powercord or receptacle or terminal block to feed UPS input.
- 7 Input powercord or receptacle or terminal block to receive the output from the UPS.
- 8 UPS input and output circuit breaker.
- 9 ATS Bypass control signal.
- 10 Auxiliary output receptacle to optional battery heater mat.
- 11 Surge Protection Device (SPD).
- 12 Surge Protection Device (SPD) Auxiliary contact.

20240420