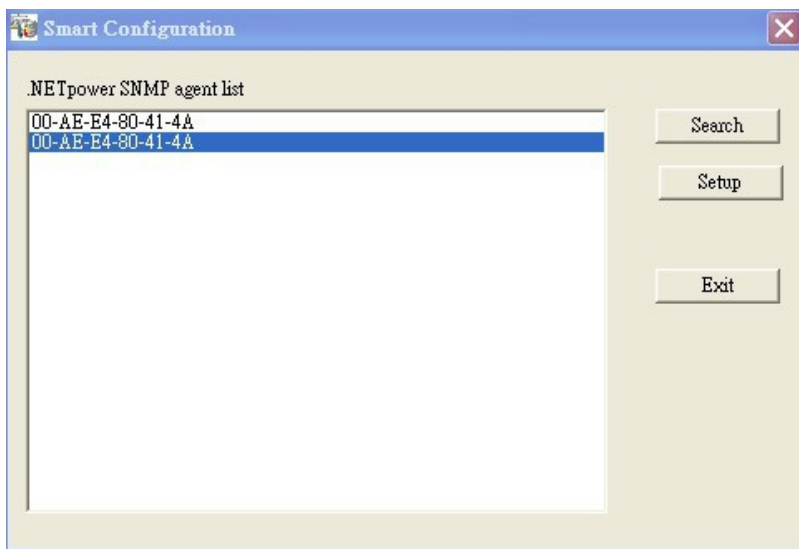


# Snmppcard Searching

Step1. Start the application smconfig.exe

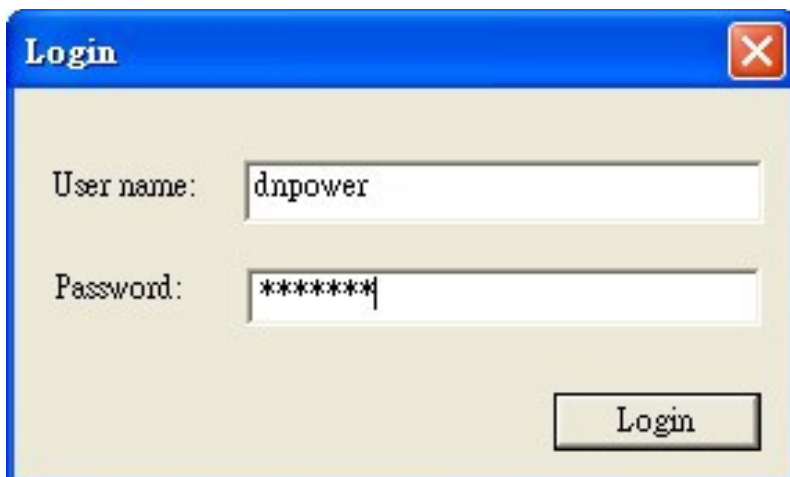


Step2. Button **Search** and it will list all of the SNMPCards

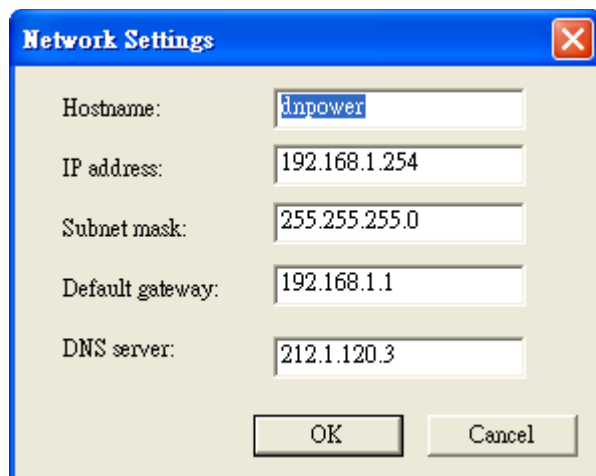


Step3. Button **Setup**

Name / Password → dnpower / dnpower



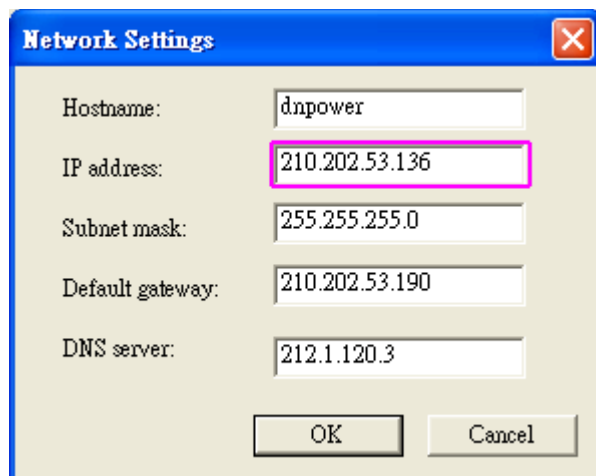
Step4. And then you can reset this snmpcard net environment (IP, Gateway, ...etc)



A screenshot of a 'Network Settings' dialog box. It has a blue title bar with a close button. The dialog contains five text input fields: 'Hostname' with 'dnpower', 'IP address' with '192.168.1.254', 'Subnet mask' with '255.255.255.0', 'Default gateway' with '192.168.1.1', and 'DNS server' with '212.1.120.3'. At the bottom are 'OK' and 'Cancel' buttons.

Hostname:	dnpower
IP address:	192.168.1.254
Subnet mask:	255.255.255.0
Default gateway:	192.168.1.1
DNS server:	212.1.120.3

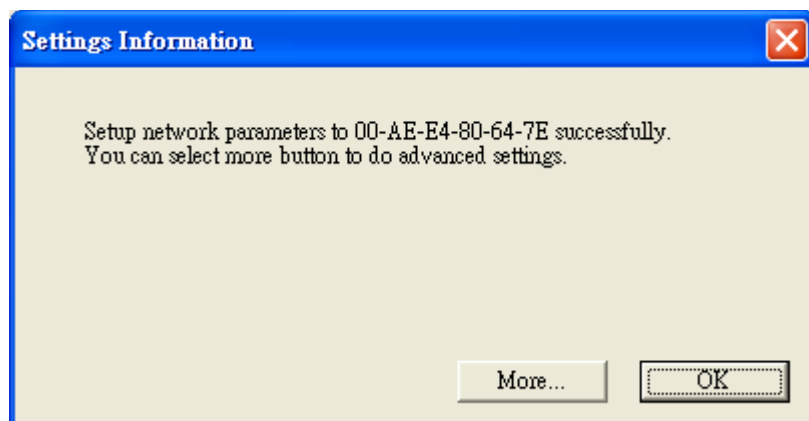
OK Cancel



A screenshot of a 'Network Settings' dialog box, similar to the first one. The 'IP address' field, containing '210.202.53.136', is highlighted with a pink border. The other fields are: 'Hostname' (dnpower), 'Subnet mask' (255.255.255.0), 'Default gateway' (210.202.53.190), and 'DNS server' (212.1.120.3). 'OK' and 'Cancel' buttons are at the bottom.

Hostname:	dnpower
IP address:	210.202.53.136
Subnet mask:	255.255.255.0
Default gateway:	210.202.53.190
DNS server:	212.1.120.3

OK Cancel



A screenshot of a 'Settings Information' dialog box. It has a blue title bar with a close button. The main area contains the text: 'Setup network parameters to 00-AE-E4-80-64-7E successfully. You can select more button to do advanced settings.' At the bottom right are 'More...' and 'OK' buttons.

Setup network parameters to 00-AE-E4-80-64-7E successfully.  
You can select more button to do advanced settings.

More... OK

And then you can get the ups monitoring via browsers

NETpower Device Manager

210.202.53.136/cgi-bin/dnpower.cgi?lang=0&

Google 新聞 聯合新聞網：觸動未來 Facebook PCM Solar Power Center Android Finance English 其他書籤

### PowerDevice Manager

Home Settings Configuration Log Control System

Measured Information

Identification Name: UPS Attached Device: NA

Links

- 1.
- 2.
- 3.

Status		Battery	
<b>Power</b>	<b>UPS</b>	<b>Battery</b>	
<b>Utility</b>	<b>Normal</b>	<b>Normal</b>	
	Bypass	<b>Charge</b>	
	Boost	Discharge	
	AVR	Test	
Battery	Buck	Low	
	Fail	Fail	
		<b>Level:</b>	
		<b>Voltage (V):</b>	41.5
		<b>Temperature:</b>	25
		<b>Backup Time:</b>	150

Input		Output	
<b>Voltage (V):</b>	121	<b>Voltage (V):</b>	120
<b>Frequency (Hz):</b>	60.0	<b>Load (%):</b>	000
		<b>Power (W):</b>	0

Manufacturer	Model	Firmware Version
UPS	Model1000	VerBQ.1B