

1. General Specification

CPU	ARM Cortex-A8 32bit
System Clock	1GHz
Flash Memory	512M Byte
SDRAM	512M Byte
USB Disk	16G Byte
LED	5
Watch Dog	Yes
USB Port	2
Environment Port	Yes
Real Time Clock	Yes
LCD Display	No
LAN Interface	10M/100M/1000M UTP
Ethernet Throughput	3M Byte per seconds
Ethernet Latency	0.2 milliseconds

2. Power Specification

NetAgent A

ITEM	Minimum	Maximum
DC Input Voltage	+5.3V	+40V
DC Input Current		9W Maximum

3. Pin Assignment

Pin	Input/Output	Description
P1 GND	GND	Ground PIN
P2 PowerIn	Input	DC power input.
P3 RS232_TXD	Output	+5.5V and -5.5V Voltage level for RS232
P4 RS232_RXD	Input	-3V to -15V for logic '1', +3V to +15V for logic '0'
P5-P7 No USE		
P8 SNMPSIG		NetAgent card plug in detect, connect to PIN 10
P9 GND	GND	Ground PIN
P10 SNMPSIG		NetAgent card plug in detect, connect to PIN 8
P11 RS232_DCD	Input	+/-3V to +/-15V for RS232
P12 RS232_DTR	Output	+5.5V and -5.5V for RS232
P13 No Use		
P14 RS232_RTS	Output	+5.5V and -5.5V for RS232
P15 RS232_CTS	Input	+/-3V to +/-15V for RS232
P16-P26 No Use		

4. Signal Specification

Receiver Inputs

PARAMETER	CONDITIONS	MIN	TYP	MAX
Input Voltage Range		-25V		+25 V
Input Threshold Low	TA = +25°C	+0.6V	+1.2V	
Input Threshold High	TA = +25°C		+1.5V	+2.4V
Input Hysteresis			0.3 V	
Input Resistance	TA = +25°C	3 k ohm	5 k ohm	7k ohm

Transmitter Outputs

PARAMETER	CONDITIONS	MIN	TYP	MAX
Output Voltage Swing	All transmitter outputs loaded with 3k ohm to ground	±5.0V	±5.4V	
Output Resistance	TA = +25°C	300	10M	
Output Short-Circuit Current			±35 mA	±60 mA

USB Port A

Parameter	Description
Output Power	Maximum 500mA
USB Function	Universal Serial Bus Specification Rev. 2.0
Data Transfer	Supports data transfer at High-speed(480Mbit/sec), Full-speed(12Mbit/sec) and Low-speed (1.5Mbit/s)

USB Port B

Parameter	Description
Output Power	Maximum 500mA
USB Function	Universal Serial Bus Specification Rev. 2.0
Data Transfer	Supports data transfer at High-speed(480Mbit/sec), Full-speed(12Mbit/sec) and Low-speed (1.5Mbit/s)

5. Environment Specification

PARAMETER	CONDITIONS	Minimum	Maximum
Operating Temperature		0 °C	60 °C
Storage Temperature		-40 °C	125 °C
Operating Humidity	Non-Condensing	10% RH	90% RH
Storage Humidity	Non-Condensing	5% RH	95% RH

EMI

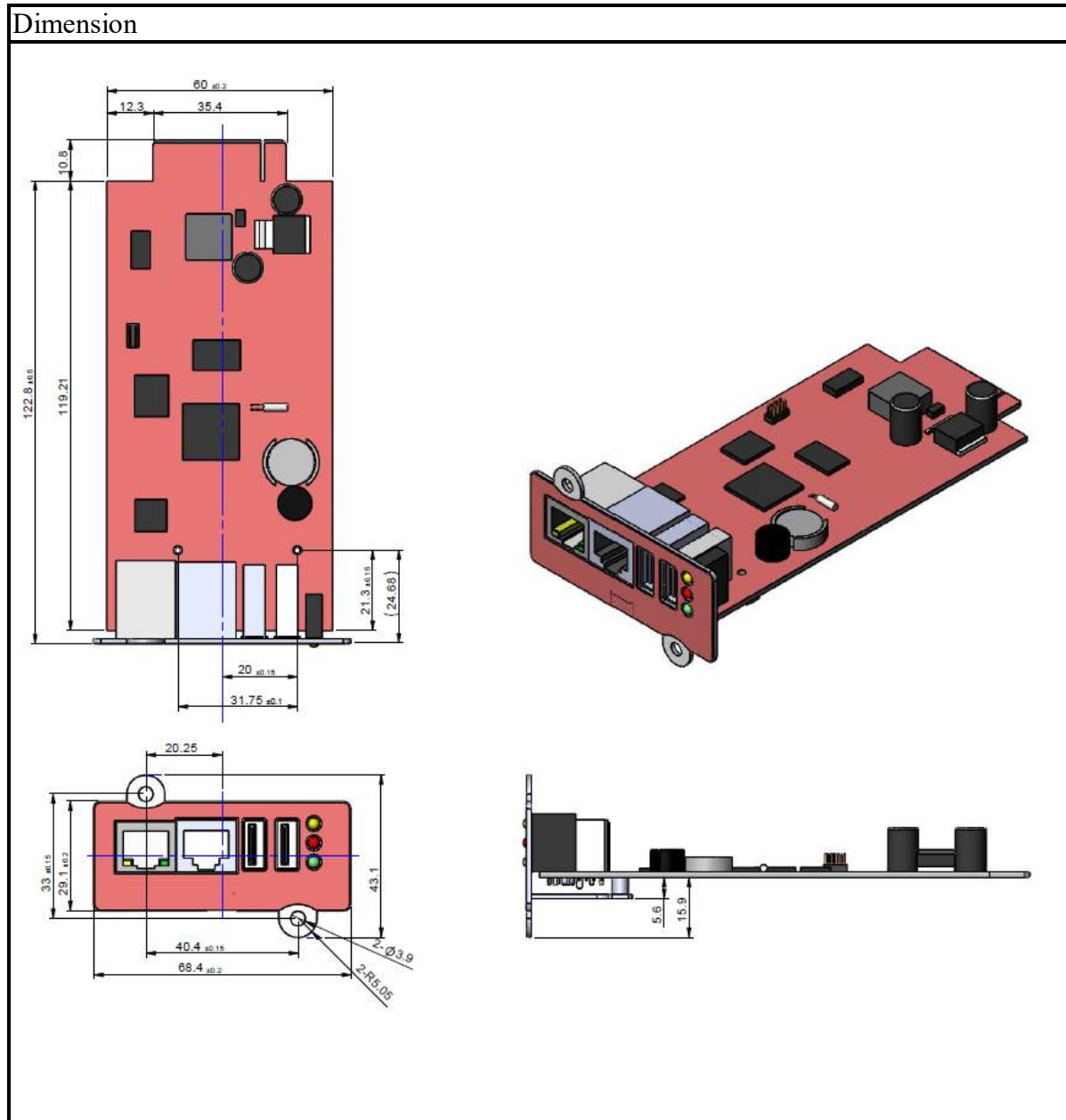
FCC Class B, CE

6. Dimension and Outlook

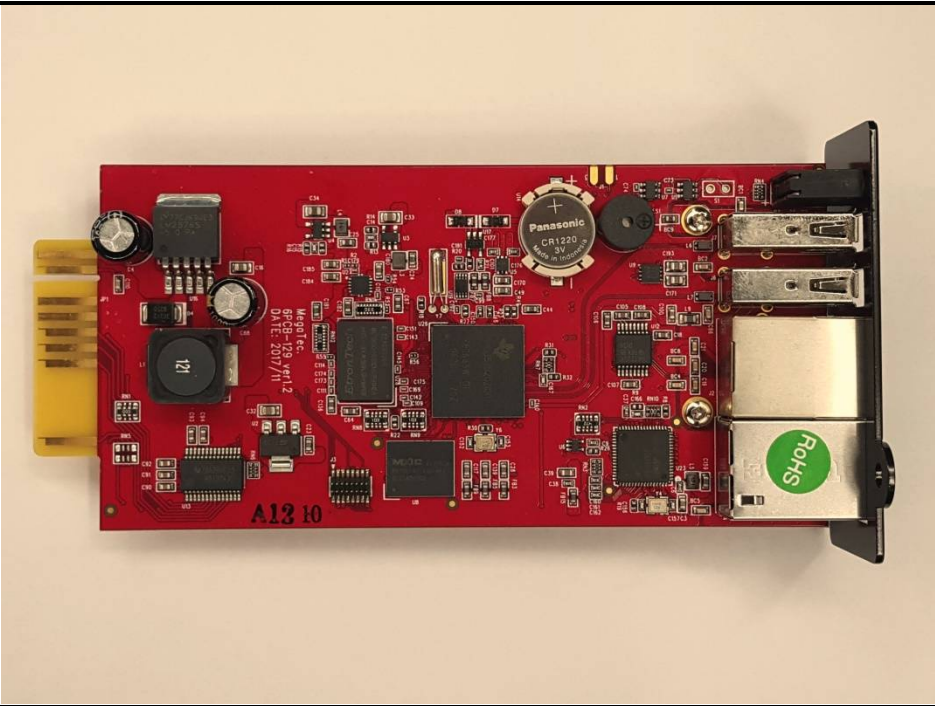
The whole package includes the following items.

A. NetAgent A Internal Card

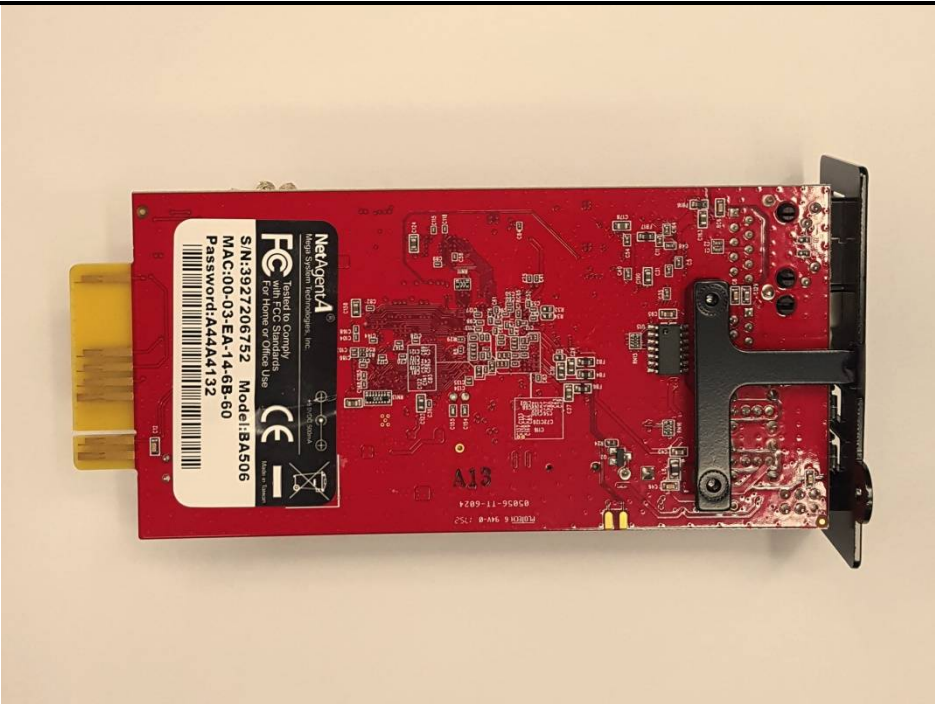
Dimension	133.6mm(L) x 68.4mm(W) x 43.1mm(H)
Weight	80.0g±2g
Connector	26pin gold finger.



Outlook
Top view



Bottom view



Front Panel

