

INF RM



Clear UPS status display



Main Feature

High quality pure sine wave output

Pure sine wave safety output for load

Build-in Automatic Voltage Regulator(AVR)

Attached with AVR stabilize fluctuate voltage problem

Long term power back up time

Extra battery connectable prolongs power backup time for equipment

Advanced microprocessor control

Upgraded technic improve power efficiency

Clear UPS status display

Attached LCD shows up UPS status

Power protection on critical device

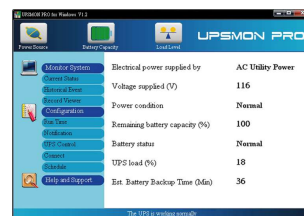
Surge, short circuit and overload protection assurance power safety

Rack type design

Rack design can integrate with commercial server rooms

UPSMON PRO and APP

Instant UPS status is available to monitor through remote control system



Specification

Model	INF-500AP RM	INF-800AP RM	INF-1100AP RM	INF-1500AP RM
Configuration				
Capacity (VA)	500 VA	800 VA	1100 VA	1500 VA
Capacity (Watts)	300 W	480 W	770 W	1050 W
Form	Rack Type			
Input				
Voltage	100 / 110 / 120 VAC or 220 / 230 / 240 VAC			
Input Voltage Range	70 - 150 or 140 - 300 VAC			
Input Frequency Range	50 Hz / 60 Hz (Auto Sensing)			
Output				
Waveform	Pure Sine Wave			
Voltage	100 / 110 / 120 VAC or 220 / 230/ 240 VAC			
Frequency	50 Hz / 60 Hz ± 1 Hz			
Transfer Time	2 - 4 ms (Typical)			
Protection				
Full Protection	Overload, Surge, Short Circuit			
Management & Communication				
Indicator	LCD Panel			
Communication Port	USB B type, RS232, SNMP SLOT			
Physical				
Dimensions (WxDxH) (mm)	428 x 219 x 130			
Weight (kgs)	6.7	8.3	11.8	13.2
Shipping Dimensions (mm)	546 x 328 x 278			
Shipping Weight (kgs)	8.9	10.5	14	15.4
Alarm				
Overload / Fault	Continuous Beeping			
Battery Mode	Beep every 2 seconds			
Low Battery	Beep every 0.5 second			
Environment				
Operating Humidity	0-90 % RH at 0-40 °C (Non-condensing)			
Audible Noise	Less than 50 dB			
Battery (Recommand Form)				
Voltage	12 VDC		24 VDC	
Battery Capacity	65 Ah - 200 Ah		100 Ah - 200 Ah	
Maximum Charge Current	10 A max		15 A max	
Discharge Protection	Auto Diagnostics, Over- Discharge, Shot Circuit, Fuse			

* Specifications are subject to change without further notice.

* Specifications are for reference, please refer to information based on real product.

20230705