

## INFINITY



Clear UPS status display



### Main Feature

#### High quality pure sine wave output

Pure sine wave safety output for load

#### Build-in Automatic Voltage Regulator(AVR)

Attached with AVR stabilize fluctuate voltage problem

#### Auto Self-diagnose and alarm warning

Self-test diagnose and emergency alarm warning

#### Long term power back up time

Extra battery connectable prolongs power backup time for equipment

#### Advanced microprocessor control

Upgraded technic improve power efficiency

#### Power protection on critical device

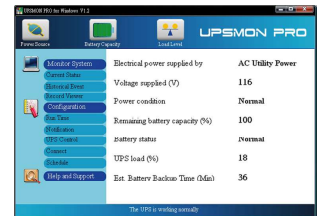
Surge, short circuit and overload protection assurance power safety

#### Clear UPS status display

Attached LCD shows up UPS status

#### UPSMON PRO and APP

Instant UPS status is available to monitor through remote control system



### Specification

Model	INF-500AP	INF-800AP	INF-1100AP	INF-1500AP	INF-3000AP
Configuration					
Capacity (VA)	500 VA	800 VA	1100 VA	1500 VA	3000 VA
Capacity (Watts)	300 W	480 W	770 W	1050 W	1800 W
Form	Tower Type				
Input					
Voltage	100 / 110 / 120 VAC or 220 / 230 / 240 VAC				220 / 230 / 240 VAC
Input Voltage Range	70 - 150 or 140 - 300 VAC				140 - 300 VAC
Input Frequency Range	50 Hz / 60 Hz (Auto Sensing)				
Output					
Waveform	Pure Sine Wave				
Voltage	100 / 110 / 120 VAC or 220 / 230 / 240 VAC				220 / 230 / 240 VAC
Frequency	50 Hz / 60 Hz ± 1 Hz				
Transfer Time	2 - 4 ms (Typical)				
Protection					
Full Protection	Overload, Fuse, Surge, Short Circuit				
Management & Communication					
Indicator	LED Panel, LCD Panel				
Communication Port	USB B type : AP Model				
Physical					
Dimensions (WxDxH) (mm)	130 x 412 x 200				
Weight (kgs)	5.8	7.2	10.8	12.2	13.4
Shipping Dimensions (mm)	253 x 488 x 321				
Shipping Weight (kgs)	7.3	8.7	12.3	13.7	14.9
Alarm					
Overload / Fault	Continuous Beeping				
Battery Mode	Beep every 2 seconds				
Low Battery	Beep every 0.5 second				
Environment					
Operating Humidity	0-90 % RH at 0-40°C (Non-condensing)				
Audible Noise	Less than 50 dB				
Battery (Recommand Form)					
Voltage	12 VDC		24 VDC		36 VDC
Battery Capacity	65 Ah - 200 Ah		100 Ah - 200 Ah		65 Ah - 200 Ah
Maximum Charge Current	10 A max		15 A max		10 A max
Discharge Protection	Auto Diagnostics, Over- Discharge, Shot Circuit, Fuse				

\* Specifications are subject to change without further notice.

\* Specifications are for reference, please refer to information based on real product.

20230515